



Federal Emergency Management Agency

Washington, D.C. 20472

LETTER OF MAP REVISION DETERMINATION DOCUMENT

COMMUNITY AND REVISION INFORMATION		PROJECT DESCRIPTION	BASIS OF REQUEST
COMMUNITY	Jefferson Parish Louisiana (Unincorporated Areas)	CHANNEL RELOCATION CHANNELIZATION CULVERT PUMP	1D HYDRAULIC ANALYSIS UPDATED TOPOGRAPHIC DATA
	COMMUNITY NO.: 225199		
IDENTIFIER	HPTR	APPROXIMATE LATITUDE AND LONGITUDE: 29.963, -90.203 SOURCE: USGS QUADRANGLE DATUM: NAD 83	
ANNOTATED MAPPING ENCLOSURES		ANNOTATED STUDY ENCLOSURES	
TYPE: FIRM*	NO.: 22051C0180F DATE: February 2, 2018	DATE OF EFFECTIVE FLOOD INSURANCE STUDY: February 02, 2018	
TYPE: FIRM	NO.: 22051C0185F DATE: February 2, 2018	SUMMARY OF STILLWATER ELEVATIONS: 2	
TYPE: FIRM	NO.: 22051C0190F DATE: February 2, 2018		

Enclosures reflect changes to flooding sources affected by this revision.

* FIRM - Flood Insurance Rate Map

FLOODING SOURCES & REVISED REACHES

See Page 2 for Additional Flooding Sources

St Peters Ditch - From the confluence with Canal No. 5 to the downstream side of Pontchartrain Road
Harahan Ditch - From the confluence with Soniat Canal to approximately 670 feet upstream of the confluence with Soniat Canal

SUMMARY OF REVISIONS

Flooding Source	Effective Flooding	Revised Flooding	Increases	Decreases
St Peters Ditch	Zone AE	Zone AE	YES	YES
	BFEs*	BFEs	YES	YES
Harahan Ditch	Zone AE	Zone AE	NONE	YES
	BFEs	BFEs	NONE	YES

* BFEs - Base Flood Elevations

DETERMINATION

This document provides the determination from the Department of Homeland Security's Federal Emergency Management Agency (FEMA) regarding a request for a Letter of Map Revision (LOMR) for the area described above. Using the information submitted, we have determined that a revision to the flood hazards depicted in the Flood Insurance Study (FIS) report and/or National Flood Insurance Program (NFIP) map is warranted. This document revises the effective NFIP map, as indicated in the attached documentation. Please use the enclosed annotated map panels revised by this LOMR for floodplain management purposes and for all flood insurance policies and renewals in your community.

This determination is based on the flood data presently available. The enclosed documents provide additional information regarding this determination. If you have any questions about this document, please contact the FEMA Mapping and Insurance eXchange toll free at 1-877-336-2627 (1-877-FEMA MAP) or by letter addressed to the LOMC Clearinghouse, 3601 Eisenhower Avenue, Suite 500, Alexandria, VA 22304-6426. Additional Information about the NFIP is available on our website at <https://www.fema.gov/national-flood-insurance-program>.

Patrick "Rick" F. Sacbibit, P.E., Branch Chief
Engineering Services Branch
Federal Insurance and Mitigation Administration

20-06-2494P

102-I-A-C



Federal Emergency Management Agency

Washington, D.C. 20472

LETTER OF MAP REVISION DETERMINATION DOCUMENT (CONTINUED)

OTHER FLOODING SOURCES AFFECTED BY THIS REVISION

FLOODING SOURCES & REVISED REACHES

Soniat Canal - From the upstream side of Airline Drive to the confluence of Mazoue Ditch, Harahan and Harahan Ditch

Cross Canal - From the confluence with Soniat Canal to the confluence of St. Peters Ditch

Canal No. 5 - From the upstream side of Elise Avenue to the confluence of Arnoult Ditch

Canal No. 6 - From the confluence with Soniat Canal to approximately 150 feet downstream of Tom Benson Way and from the confluence with Soniat Canal to approximately 690 feet upstream of Wilker Neal Avenue

Mazoue Ditch - From the confluence with Soniat Canal to the downstream side of Jefferson Highway

Crochet Ditch - From the confluence with Canal No. 6 to the downstream side of River Road

Brown Miller Ditch - From the confluence with Cross Canal to the downstream side of Citrus Boulevard

Camp Plauche Ditch - From the confluence with Canal No. 6 to the divergence from Cross Canal

Cains Ditch - From the confluence with Soniat Canal to the downstream side of Melrose Lane

SUMMARY OF REVISIONS

Flooding Source	Effective Flooding	Revised Flooding	Increases	Decreases
Soniat Canal	BFEs*	BFEs	NONE	YES
	Zone AE	Zone AE	YES	YES
Cross Canal	BFEs	BFEs	NONE	YES
	Zone AE	Zone AE	YES	YES
Canal No. 5	BFEs	BFEs	YES	YES
	Zone AE	Zone AE	YES	YES
Canal No. 6	BFEs	BFEs	NONE	YES
	Zone AE	Zone AE	YES	YES
Mazoue Ditch	BFEs	BFEs	YES	YES
	Zone AE	Zone AE	YES	YES
Crochet Ditch	BFEs	BFEs	YES	YES
	Zone AE	Zone AE	YES	YES
Brown Miller Ditch	BFEs	BFEs	NONE	YES
	Zone AE	Zone AE	YES	YES
Camp Plauche Ditch	BFEs	BFEs	NONE	YES
	Zone AE	Zone AE	YES	YES
Cains Ditch	BFEs	BFEs	NONE	YES
	Zone AE	Zone AE	YES	YES

* BFEs - Base Flood Elevations

This determination is based on the flood data presently available. The enclosed documents provide additional information regarding this determination. If you have any questions about this document, please contact the FEMA Mapping and Insurance eXchange toll free at 1-877-336-2627 (1-877-FEMA MAP) or by letter addressed to the LOMC Clearinghouse, 3601 Eisenhower Avenue, Suite 500, Alexandria, VA 22304-6426. Additional Information about the NFIP is available on our website at <https://www.fema.gov/national-flood-insurance-program>.

Patrick "Rick" F. Sacbbit, P.E., Branch Chief
Engineering Services Branch
Federal Insurance and Mitigation Administration



Federal Emergency Management Agency
Washington, D.C. 20472

**LETTER OF MAP REVISION
DETERMINATION DOCUMENT (CONTINUED)**

OTHER COMMUNITIES AFFECTED BY THIS REVISION

CID Number: 225200 **Name:** City of Harahan, Louisiana

AFFECTED MAP PANELS

TYPE: FIRM* NO.: 22051C0180F DATE: February 2, 2018

AFFECTED PORTIONS OF THE FLOOD INSURANCE STUDY REPORT

DATE OF EFFECTIVE FLOOD INSURANCE STUDY: February 2, 2018
SUMMARY OF STILLWATER ELEVATIONS: 2

This determination is based on the flood data presently available. The enclosed documents provide additional information regarding this determination. If you have any questions about this document, please contact the FEMA Mapping and Insurance eXchange toll free at 1-877-336-2627 (1-877-FEMA MAP) or by letter addressed to the LOMC Clearinghouse, 3601 Eisenhower Avenue, Suite 500, Alexandria, VA 22304-6426. Additional Information about the NFIP is available on our website at <https://www.fema.gov/national-flood-insurance-program>.

Patrick "Rick" F. Sacbibit, P.E., Branch Chief
Engineering Services Branch
Federal Insurance and Mitigation Administration



Federal Emergency Management Agency

Washington, D.C. 20472

LETTER OF MAP REVISION DETERMINATION DOCUMENT (CONTINUED)

COMMUNITY INFORMATION

APPLICABLE NFIP REGULATIONS/COMMUNITY OBLIGATION

We have made this determination pursuant to Section 206 of the Flood Disaster Protection Act of 1973 (P.L. 93-234) and in accordance with the National Flood Insurance Act of 1968, as amended (Title XIII of the Housing and Urban Development Act of 1968, P.L. 90-448), 42 U.S.C. 4001-4128, and 44 CFR Part 65. Pursuant to Section 1361 of the National Flood Insurance Act of 1968, as amended, communities participating in the NFIP are required to adopt and enforce floodplain management regulations that meet or exceed NFIP criteria. These criteria, including adoption of the Flood Insurance Study (FIS) report and FIRM, and the modifications made by this LOMR, are the minimum requirements for continued NFIP participation and do not supersede more stringent State/Commonwealth or local requirements to which the regulations apply.

National Flood Insurance Program (NFIP) regulations Subparagraph 60.3(b)(7) requires communities to ensure that the flood-carrying capacity within the altered or relocated portion of any watercourse is maintained. This provision is incorporated into your community's existing floodplain management ordinances; therefore, responsibility for maintenance of the altered or relocated watercourse, including any related appurtenances such as bridges, culverts, and other drainage structures, rests with your community. We may request that your community submit a description and schedule of maintenance activities necessary to ensure this requirement.

COMMUNITY REMINDERS

We based this determination on the 1-percent-annual-chance flood discharges computed in the FIS for your community without considering subsequent changes in watershed characteristics that could increase flood discharges. Future development of projects upstream could cause increased flood discharges, which could cause increased flood hazards. A comprehensive restudy of your community's flood hazards would consider the cumulative effects of development on flood discharges subsequent to the publication of the FIS report for your community and could, therefore, establish greater flood hazards in this area.

Your community must regulate all proposed floodplain development and ensure that permits required by Federal and/or State/Commonwealth law have been obtained. State/Commonwealth or community officials, based on knowledge of local conditions and in the interest of safety, may set higher standards for construction or may limit development in floodplain areas. If your State/Commonwealth or community has adopted more restrictive or comprehensive floodplain management criteria, those criteria take precedence over the minimum NFIP requirements.

We will not print and distribute this LOMR to primary users, such as local insurance agents or mortgage lenders; instead, the community will serve as a repository for the new data. We encourage you to disseminate the information in this LOMR by preparing a news release for publication in your community's newspaper that describes the revision and explains how your community will provide the data and help interpret the NFIP maps. In that way, interested persons, such as property owners, insurance agents, and mortgage lenders, can benefit from the information.

This determination is based on the flood data presently available. The enclosed documents provide additional information regarding this determination. If you have any questions about this document, please contact the FEMA Mapping and Insurance eXchange toll free at 1-877-336-2627 (1-877-FEMA MAP) or by letter addressed to the LOMC Clearinghouse, 3601 Eisenhower Avenue, Suite 500, Alexandria, VA 22304-6426. Additional Information about the NFIP is available on our website at <https://www.fema.gov/national-flood-insurance-program>.

A handwritten signature in black ink, appearing to read "Rick F. Sacbbit".

Patrick "Rick" F. Sacbbit, P.E., Branch Chief
Engineering Services Branch
Federal Insurance and Mitigation Administration



Federal Emergency Management Agency

Washington, D.C. 20472

LETTER OF MAP REVISION DETERMINATION DOCUMENT (CONTINUED)

We have designated a Consultation Coordination Officer (CCO) to assist your community. The CCO will be the primary liaison between your community and FEMA. For information regarding your CCO, please contact:

Ms. Sandy Keefe
Director, Mitigation Division
Federal Emergency Management Agency, Region VI
Federal Regional Center, Room 202
800 North Loop 288
Denton, TX 76209
(940) 898-5127

STATUS OF THE COMMUNITY NFIP MAPS

We will not physically revise and republish the FIRM and FIS report for your community to reflect the modifications made by this LOMR at this time. When changes to the previously cited FIRM panels and FIS report warrant physical revision and republication in the future, we will incorporate the modifications made by this LOMR at that time.

This determination is based on the flood data presently available. The enclosed documents provide additional information regarding this determination. If you have any questions about this document, please contact the FEMA Mapping and Insurance eXchange toll free at 1-877-336-2627 (1-877-FEMA MAP) or by letter addressed to the LOMC Clearinghouse, 3601 Eisenhower Avenue, Suite 500, Alexandria, VA 22304-6426. Additional Information about the NFIP is available on our website at <https://www.fema.gov/national-flood-insurance-program>.

A handwritten signature in black ink, appearing to read "Rick F. Sacbibit".

Patrick "Rick" F. Sacbibit, P.E., Branch Chief
Engineering Services Branch
Federal Insurance and Mitigation Administration



Federal Emergency Management Agency

Washington, D.C. 20472

LETTER OF MAP REVISION DETERMINATION DOCUMENT (CONTINUED)

PUBLIC NOTIFICATION OF REVISION

A notice of changes will be published in the *Federal Register*. This information also will be published in your local newspaper on or about the dates listed below, and through FEMA's Flood Hazard Mapping website at

https://www.floodmaps.fema.gov/fhm/bfe_status/bfe_main.asp

LOCAL NEWSPAPER

Name: *The Advocate*

Dates: August 24, 2021 and August 31, 2021

Within 90 days of the second publication in the local newspaper, any interested party may request that we reconsider this determination. Any request for reconsideration must be based on scientific or technical data. Therefore, this letter will be effective only after the 90-day appeal period has elapsed and we have resolved any appeals that we receive during this appeal period. Until this LOMR is effective, the revised flood hazard determination presented in this LOMR may be changed.

This determination is based on the flood data presently available. The enclosed documents provide additional information regarding this determination. If you have any questions about this document, please contact the FEMA Mapping and Insurance eXchange toll free at 1-877-336-2627 (1-877-FEMA MAP) or by letter addressed to the LOMC Clearinghouse, 3601 Eisenhower Avenue, Suite 500, Alexandria, VA 22304-6426. Additional Information about the NFIP is available on our website at <https://www.fema.gov/national-flood-insurance-program>.

A handwritten signature in black ink, appearing to read "Rick F. Sacbibit".

Patrick "Rick" F. Sacbibit, P.E., Branch Chief
Engineering Services Branch
Federal Insurance and Mitigation Administration

Table 2 - Summary of Stillwater Elevations (continued)

FLOODING SOURCE AND LOCATION	ELEVATION (feet NAVD)			
	10-PERCENT ANNUAL CHANCE	2-PERCENT ANNUAL CHANCE	1-PERCENT ANNUAL CHANCE	0.2-PERCENT ANNUAL CHANCE
66	-2.9	-2.9	-3	5.0
68	-4.4	-3.7	-3	5.0
7	1.0	1.0	1	5.0
71	-4.0	-4.0	-3	5.0
72	-0.4	-0.4	0	5.0
73	-7.0	-1.9	-1	5.0
75	-0.1	0.1	0	5.0
76	-0.5	-0.3	0	5.0
77	-0.8	0.5	1	5.0
78	-3.8	-1.7	-1	5.0
79	-5.0	-2.3	-1	5.0
8	2.1	3.0	3	5.0
82	-1.4	-1.1	-1	5.0
89	-2.5	-1.8	-1	5.0
90	-1.7	-1.3	-1	5.0
82	-3.2	-2.8	-2	5.0
93	-3.2	-2.8	-2	5.0

HOEY'S POLDER

(list of storage areas below)

100	2.3	2.5	3	3.0
101	0.3	0.7	1	1.1
102	0.3	0.7	1	1.1
103	0.1	0.7	1	1.1
104	-0.6	-0.1	0	0.3
105	0.3	0.7	1	1.0
90	-2.1	-0.7	-1	0.3
91	-0.8	-0.2	0	0.5
Causeway Pond	3.4	3.8	4	4.0
Pontiff				
Playground	-0.3	0.3	0	0.8

JEFFERSON EAST BANK POLDER

(list of storage areas below)

1000	-3.9	-3.7	-3	12.0
1001	-5.0	-4.7	-4	12.0
1002	-4.1	-3.9	-4	12.0
1004	-4.8	-4.3	-4	12.0
1005	-4.3	-3.9	-4	12.0
1006	-3.4	-3.3	-3	12.0
1007	-3.6	-3.4	-3	12.0
1008	-4.5	-4.1	-4	12.0
1009	-4.3	-4.0	-4	12.0
1010	-5.9	-5.8	-5	12.0
1011	-5.0	-5.0	-5	12.0
1013	-5.4	-5.1	-5	12.0
1014	-5.0	-4.9	-5	12.0

← REVISIED
DATA

Table 2 - Summary of Stillwater Elevations (continued)

FLOODING SOURCE AND LOCATION	ELEVATION (feet NAVD)			
	10-PERCENT ANNUAL CHANCE	2-PERCENT ANNUAL CHANCE	1-PERCENT ANNUAL CHANCE	0.2-PERCENT ANNUAL CHANCE
1015	-5.3	-5.1	-5	12.0
1016	-4.8	-4.7	-5	12.0
1017	-4.9	-4.8	-5	12.0
1018	-4.8	-4.7	-5	12.0
1019	-4.9	-4.8	-5	12.0
1020	-4.2	-4.1	-4	12.0
1022	-5.0	-5.0	-5	12.0
1023	-4.3	-4.2	-4	12.0
1024	-2.2	-2.0	-2	12.0
1025	-1.1	-1.1	-1	12.0
1028	-11.8	-8.0	-7	12.0
1029	-5.2	-5.0	-5	12.0
1030	-6.5	-5.2	-5	12.0
1031	-5.2	-5.0	-5	12.0
1032	-5.0	-4.8	-4	12.0
1034	-6.9	-6.5	-6	12.0
1035	-5.5	-5.3	-5	12.0
1036	-6.1	-6.1	-6	12.0
1037	-5.4	-5.3	-5	12.0
1038	-5.8	-5.7	-5	12.0
1039	-5.2	-5.1	-5	12.0
1040	-5.4	-5.3	-5	12.0
1041	-6.1	-5.5	-5	12.0
1042	-5.7	-5.6	-5	12.0
1043	-5.4	-5.3	-5	12.0
1044	-5.6	-5.5	-5	12.0
1045	-5.2	-5.1	-5	12.0
1046	-5.2	-5.2	-5	12.0
1047	2.0	2.4	3	12.0
1048	1.9	2.5	3	12.0
1049	6.0	6.1	6	12.0
1050	2.0	2.2	3	12.0
1051	6.3	6.4	7	12.0
1052	5.6	5.5	6	12.0
1053	3.9	4.1	4	12.0
1054	3.1	3.2	3	12.0
1055	3.9	4.0	4	12.0
1057	1.2	1.7	2	12.0
1058	3.2	3.3	3	12.0
1059	3.6	3.8	4	12.0
1060	-1.5	-1.2	-1	12.0
1061	-3.5	-3.2	-3	12.0
1062	0.8	1.1	2	12.0
1064	-4.9	-4.7	-4	12.0
1065	-4.9	-4.7	-4	12.0
1066	-1.8	-1.8	-2	12.0
1067	-2.9	-2.9	-3	12.0

← REVISED DATA

← REVISED DATA

← REVISED DATA

Table 2 - Summary of Stillwater Elevations (continued)

FLOODING SOURCE AND LOCATION	ELEVATION (feet NAVD)			
	10-PERCENT ANNUAL CHANCE	2-PERCENT ANNUAL CHANCE	1-PERCENT ANNUAL CHANCE	0.2-PERCENT ANNUAL CHANCE
1068	-5.5	-5.1	-5	12.0
1069	-5.4	-5.1	-5	12.0
1070	-5.7	-5.2	-5	12.0
1072	-2.8	-2.6	-2	12.0
1074	-0.7	-0.5	0	12.0
1076	2.5	2.5	3	12.0
1077	3.4	3.6	4	12.0
1078	1.3	1.9	3	12.0
1079	2.2	2.4	3	12.0
1080	1.3	1.8	2	12.0
1081	1.2	1.6	2	12.0
1083	1.6	2.0	3	12.0
1084	-2.8	-2.6	-2	12.0
1085	-2.5	-2.3	-2	12.0
1086	-3.7	-3.6	-3	12.0
1087	-3.8	-3.8	-4	12.0
1088	-0.8	-0.8	0	12.0
1090	1.3	1.7	2	12.0
1091	1.7	2.1	2	12.0
1092	1.5	1.7	2	12.0
1093	1.1	1.5	2	12.0
1094	1.1	1.6	2	12.0
1095	1.1	1.6	2	12.0
1096	5.4	6.1	7	12.0
1097	5.4	6.0	7	12.0
1438	0.2	0.3	1	12.0
1516	-6.0	-5.5	-5	12.0
1517	-6.0	-5.5	-5	12.0
1537	-4.7	-4.6	-5	12.0
1538	-4.7	-4.3	-4	12.0
1541	-5.2	-5.0	-5	12.0
1543	-5.8	-5.5	-5	12.0
1547	-2.1	-1.2	0	12.0
1550	1.1	1.6	2	12.0
1552	0.3	1.6	2	12.0
1554	1.4	1.4	2	12.0
1556	2.8	2.8	3	12.0
1558	4.0	4.0	4	12.0
1559	-0.4	-0.4	0	12.0
1560	1.2	1.2	1	12.0
1564	-3.0	-3.0	0	12.0
1565	-0.9	-0.3	0	12.0
1573	-5.5	-5.1	-5	12.0
1582	-4.4	-4.3	-4	12.0
1585	-3.2	-3.0	-3	12.0
1587	-5.5	-5.1	-5	12.0
1591	-4.3	-4.2	-4	12.0

← REVIS
DATA

← REVIS
DATA

← REVIS
DATA

Table 2 - Summary of Stillwater Elevations (continued)

FLOODING SOURCE AND LOCATION	ELEVATION (feet NAVD)			
	10-PERCENT ANNUAL CHANCE	2-PERCENT ANNUAL CHANCE	1-PERCENT ANNUAL CHANCE	0.2-PERCENT ANNUAL CHANCE
1593	-3.7	-3.6	-3	12.0
1595	-3.0	-2.9	-3	12.0
1657	1.7	2.0	2	12.0
1678	-0.8	-0.2	1	12.0
1679	1.9	2.1	2	12.0
2770	-4.6	-4.6	-4	12.0
2771	-2.9	-2.9	-3	12.0
2773	2.2	2.3	3	12.0
2774	-4.8	-4.7	-4	12.0
2776	-4.4	-4.2	-4	12.0
3001	3.1	3.3	4	12.0
819	-4.7	-4.3	-4	12.0
820	-2.7	-2.6	-2	12.0
822	-2.0	-2.0	-2	12.0
824	-7.4	-6.0	-6	12.0
825	-6.3	-6.0	-6	12.0
826	-6.7	-6.1	-6	12.0
827	-6.5	-6.1	-6	12.0
828	-6.4	-6.0	-6	12.0
829	-6.6	-6.1	-6	12.0
830	-6.7	-6.2	-6	12.0
831	-6.7	-6.2	-6	12.0
832	-5.8	-5.7	-6	12.0
835	-6.6	-6.2	-6	12.0
836	-6.6	-6.2	-6	12.0
837	-6.8	-6.3	-6	12.0
838	-7.9	-6.3	-6	12.0
839	-6.2	-6.1	-6	12.0
840	-6.9	-6.4	-6	12.0
841	-6.4	-6.3	-6	12.0
842	-5.4	-5.4	-5	12.0
844	-6.5	-6.2	-6	12.0
845	-6.7	-6.3	-6	12.0
846	-7.8	-6.2	-6	12.0
847	-6.6	-6.2	-6	12.0
848	-6.6	-6.2	-6	12.0
849	-6.4	-6.0	-6	12.0
850	-6.3	-5.8	-5	12.0
851	-6.1	-6.0	-6	12.0
852	-6.7	-6.3	-6	12.0
853	-7.9	-6.1	-6	12.0
854	-6.4	-6.0	-6	12.0
855	-6.6	-5.9	-5	12.0
856	-6.1	-5.9	-5	12.0
857	-6.5	-6.0	-6	12.0
858	-6.0	-5.6	-5	12.0
860	-6.1	-5.8	-5	12.0

REVISED
DATA

Table 2 - Summary of Stillwater Elevations (continued)

FLOODING SOURCE AND LOCATION	ELEVATION (feet NAVD)			
	10-PERCENT ANNUAL CHANCE	2-PERCENT ANNUAL CHANCE	1-PERCENT ANNUAL CHANCE	0.2-PERCENT ANNUAL CHANCE
928	-3.3	-3.1	-3	12.0
929	-3.7	-3.4	-3	12.0
930	-3.6	-3.2	-3	12.0
931	-4.0	-3.7	-3	12.0
932	1.2	1.7	3	12.0
933	1.3	1.8	3	12.0
934	2.6	2.7	3	12.0
936	1.4	1.7	2	12.0
937	1.4	1.8	3	12.0
939	0.8	0.8	1	12.0
940	0.7	0.7	1	12.0
941	2.4	2.4	2	12.0
942	-0.1	1.0	3	12.0
945	0.2	1.4	3	12.0
946	-5.8	-5.4	-5	12.0
947	-5.7	-5.4	-5	12.0
948	-5.6	-5.4	-5	12.0
949	-5.4	-5.4	-5	12.0
950	-5.6	-5.5	-5	12.0
951	-5.6	-5.5	-5	12.0
952	-6.3	-5.8	-5	12.0
953	-5.9	-5.4	-5	12.0
954	-5.3	-5.2	-5	12.0
955	-5.9	-5.5	-5	12.0
956	-5.5	-5.2	-5	12.0
957	-5.8	-5.3	-5	12.0
958	-5.7	-5.3	-5	12.0
959	-5.6	-5.2	-5	12.0
960	-5.5	-5.1	-5	12.0
961	-5.6	-5.2	-5	12.0
962	-7.1	-6.5	-6	12.0
964	-5.3	-4.7	-4	12.0
965	-2.6	-2.5	-2	12.0
966	-2.8	-2.6	-2	12.0
967	-4.3	-4.0	-4	12.0
968	-2.9	-2.7	-2	12.0
969	-3.6	-3.5	-3	12.0
970	-4.2	-4.0	-4	12.0
971	-3.8	-3.6	-3	12.0
972	-4.2	-4.0	-4	12.0
973	-3.8	-3.6	-3	12.0
974	-4.0	-3.9	-4	12.0
975	-3.0	-3.0	-3	12.0
976	-2.6	-2.5	-2	12.0
977	-4.0	-3.9	-4	12.0

← REVISED DATA

← REVISED DATA

← REVISED DATA

← REVISED DATA

Table 2 - Summary of Stillwater Elevations (continued)

FLOODING SOURCE AND LOCATION	ELEVATION (feet NAVD)			
	10-PERCENT ANNUAL CHANCE	2-PERCENT ANNUAL CHANCE	1-PERCENT ANNUAL CHANCE	0.2-PERCENT ANNUAL CHANCE
978	0.8	1.0	2	12.0
979	0.7	0.9	2	12.0
980	-1.9	-1.7	-1	12.0
981	-1.9	-1.7	-1	12.0
982	0.6	0.6	2	12.0
984	-0.3	-0.3	2	12.0
985	0.0	0.0	2	12.0
986	-3.1	0.6	2	12.0
987	0.1	0.1	0	12.0
989	-5.0	-4.5	-4	12.0
990	-4.3	-4.0	-4	12.0
991	-5.1	-4.6	-4	12.0
992	-4.4	-4.1	-4	12.0
993	-5.0	-4.6	-4	12.0
994	-4.4	-4.2	-4	12.0
995	-4.9	-4.8	-5	12.0
996	-4.2	-4.0	-4	12.0
997	-4.7	-4.6	-4	12.0
998	-4.1	-4.0	-4	12.0

← REVISED DATA

← REVISED DATA

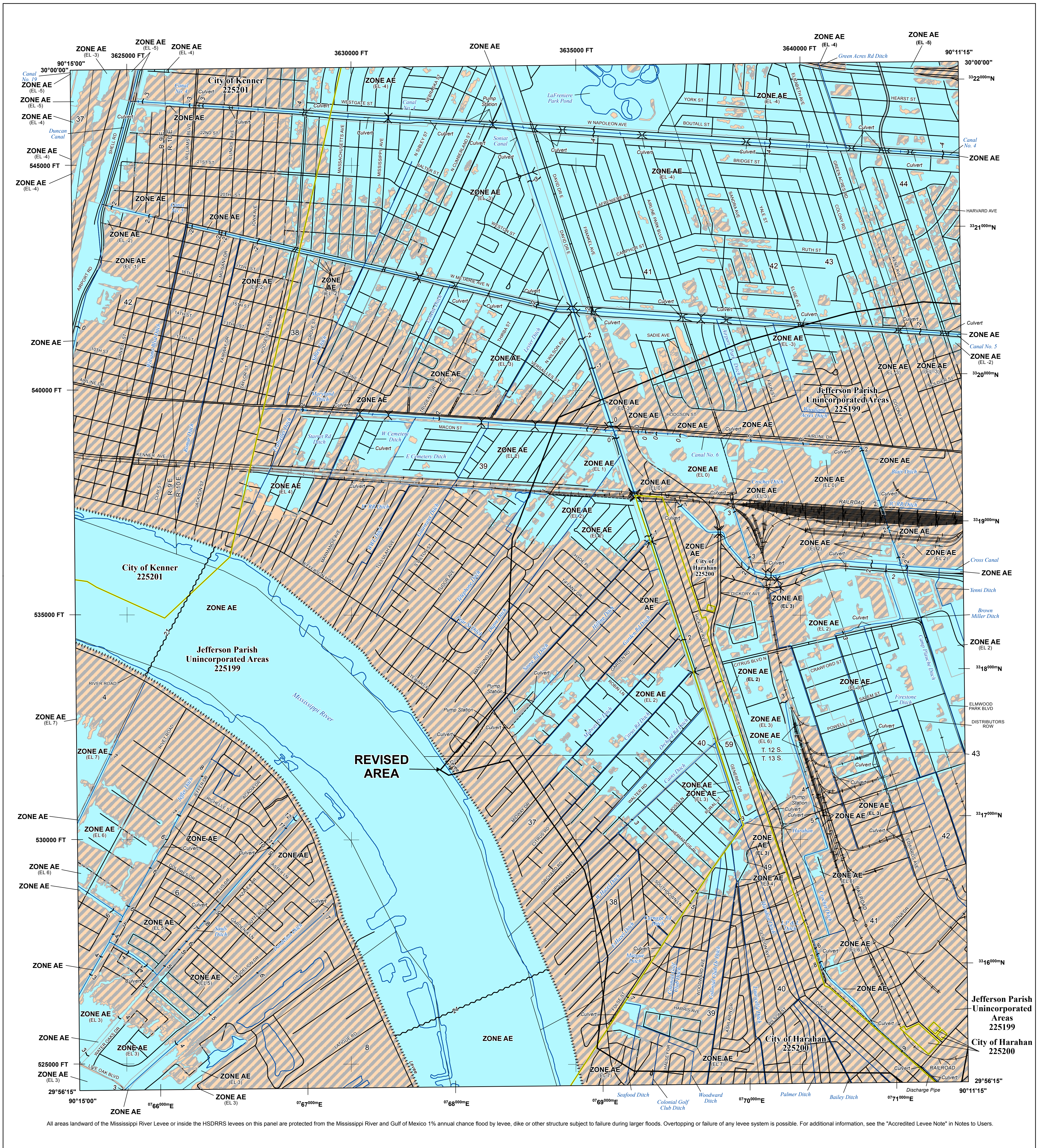
3.2 Hydraulic Analyses

Analyses of the hydraulic characteristics of flooding from the sources studied were carried out to provide estimates of the elevations of floods of the selected recurrence intervals. Users should be aware that flood elevations shown on the FIRM represent rounded whole-foot elevations and may not exactly reflect the elevations shown on the Flood Profiles or in the Floodway Data tables in the FIS report. Flood elevations shown on the FIRM are primarily intended for flood insurance rating purposes. For construction and/or floodplain management purposes, users are cautioned to use the flood elevation data presented in this FIS in conjunction with the data shown on the FIRM.

Locations of selected cross sections used in the hydraulic analyses are shown on the Flood Profiles (Exhibit 1). For stream segments for which a floodway was computed (Section 4.2), selected cross-section locations are also shown on the FIRM.

The hydraulic analyses for this study were based on unobstructed flow. The flood elevations shown on the Flood Profiles (Exhibit 1) are thus considered valid only if hydraulic structures remain unobstructed, operate properly, and do not fail.

Please note that for this parishwide analyses, flood profiles were not developed for the channels inside the HSDRRS levee system as no structures are built in the channels. Due to the lack of structures in the channels, flood profiles for the channels would serve no purpose for floodplain management.



All areas landward of the Mississippi River Levee or inside the HSDRRS levees on this panel are protected from the Mississippi River and Gulf of Mexico 1% annual chance flood by levee, dike or other structure subject to failure during larger floods. Overtopping or failure of any levee system is possible. For additional information, see the "Accredited Levee Note" in Notes to Users.

FLOOD HAZARD INFORMATION

SEE FIS REPORT FOR ZONE DESCRIPTIONS AND INDEX MAP
 THE INFORMATION DEPICTED ON THIS MAP AND SUPPORTING
 DOCUMENTATION ARE ALSO AVAILABLE IN DIGITAL FORMAT AT
[HTTPS://MSC.FEMA.GOV](https://MSC.FEMA.GOV)

	Without Base Flood Elevation (BFE) Zone A.V, A99
	With BFE or Depth Zone AE, AO, AH, VE, AR
	Regulatory Floodway
	0.2% Annual Chance Flood Hazard, Areas of 1% annual chance flood with average depth less than one foot or with drainage areas of less than one square mile Zone X
	Future Conditions 1% Annual Chance Flood Hazard Zone X
	Area with Reduced Flood Risk due to Levee See Notes. Zone X
	NO SCREEN
	Areas Determined to be Outside the 0.2% Annual Chance Floodplain Zone X
	Area of Undetermined Flood Hazard Zone D
	Channel, Culvert, or Storm Sewer
	Levee, Dike, or Floodwall
	18.2 Cross Sections with 1% Annual Chance Water Surface Elevation (BFE)
	17.5
	Coastal Transect
	Coastal Transect Baseline
	Profile Baseline
	Hydrographic Feature
	Base Flood Elevation Line (BFE)
	Limit of Study
	Jurisdiction Boundary

NOTES TO USERS

For information and questions about this Flood Insurance Rate Map (FIRM), available products associated with this FIRM, including historic versions, the current map date for each FIRM panel, how to order products, or the National Flood Insurance Program (NFIP) in general, please call the FEMA Mapping and Insurance Exchange at 1-877-FEMA-MAP (1-877-336-2627) or visit the FEMA Flood Map Service Center website at <https://msc.fema.gov>. Available products may include previously issued Letters of Map Change, a Flood Insurance Study Report, and/or digital versions of this map. Many of these products can be ordered or obtained directly from the website.

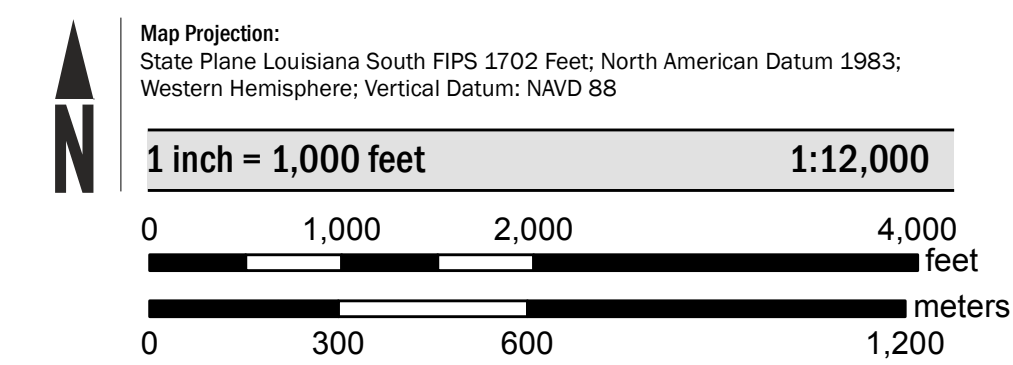
Communities annexing land on adjacent FIRM panels must obtain a current copy of the adjacent panel as well as the current FIRM Index. These may be ordered directly from the Flood Map Service Center at the number listed above.

For community and countywide map dates refer to the Flood Insurance Study report for this jurisdiction. To determine if flood insurance is available in the community, contact your insurance agent or call the National Flood Insurance Program at 1-800-638-6620.

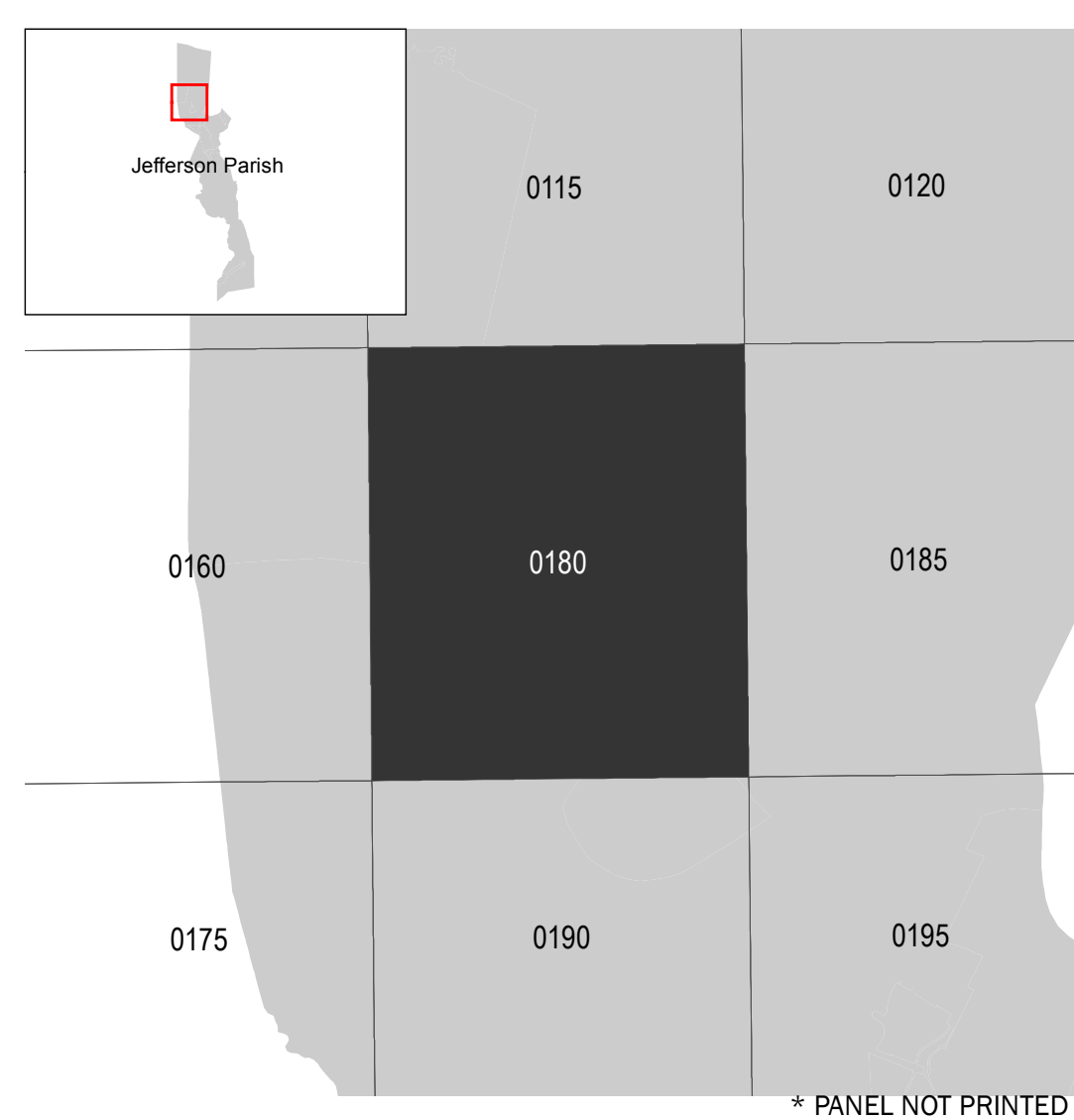
Base map information shown on this FIRM was derived from multiple sources. This information was compiled and provided in digital format by the USACE, New Orleans District; FEMA; Interagency Performance Evaluation Task Force (IPET); United States Fish and Wildlife Service; Jefferson Parish GIS Department; and the Louisiana Department of Transportation. This information was developed at scales of 1"=2000' and 1"=1000'.

ACCREDITED LEVEE NOTES TO USERS: Check with your local community to obtain more information, such as the estimated level of protection provided (which may exceed the 1-percent-annual-chance level) and Emergency Action Plan, on the levee system(s) shown as providing protection for areas on this panel. To mitigate flood risk in residual risk areas, property owners and residents are encouraged to consider flood insurance and floodproofing or other protective measures. For more information on flood insurance, interested parties should visit <http://www.fema.gov/national-flood-insurance-program>.

SCALE



PANEL LOCATOR



National Flood Insurance Program

NATIONAL FLOOD INSURANCE PROGRAM
FLOOD INSURANCE RATE MAP

JEFFERSON PARISH, LOUISIANA
 and Incorporated Areas
PANEL 180 of 600

Panel Contains:

COMMUNITY	NUMBER	PANEL	SUFFIX
HARAHAN, CITY OF	225200	0180	F
JEFFERSON PARISH	225199	0180	F
KENNER, CITY OF	225201	0180	F

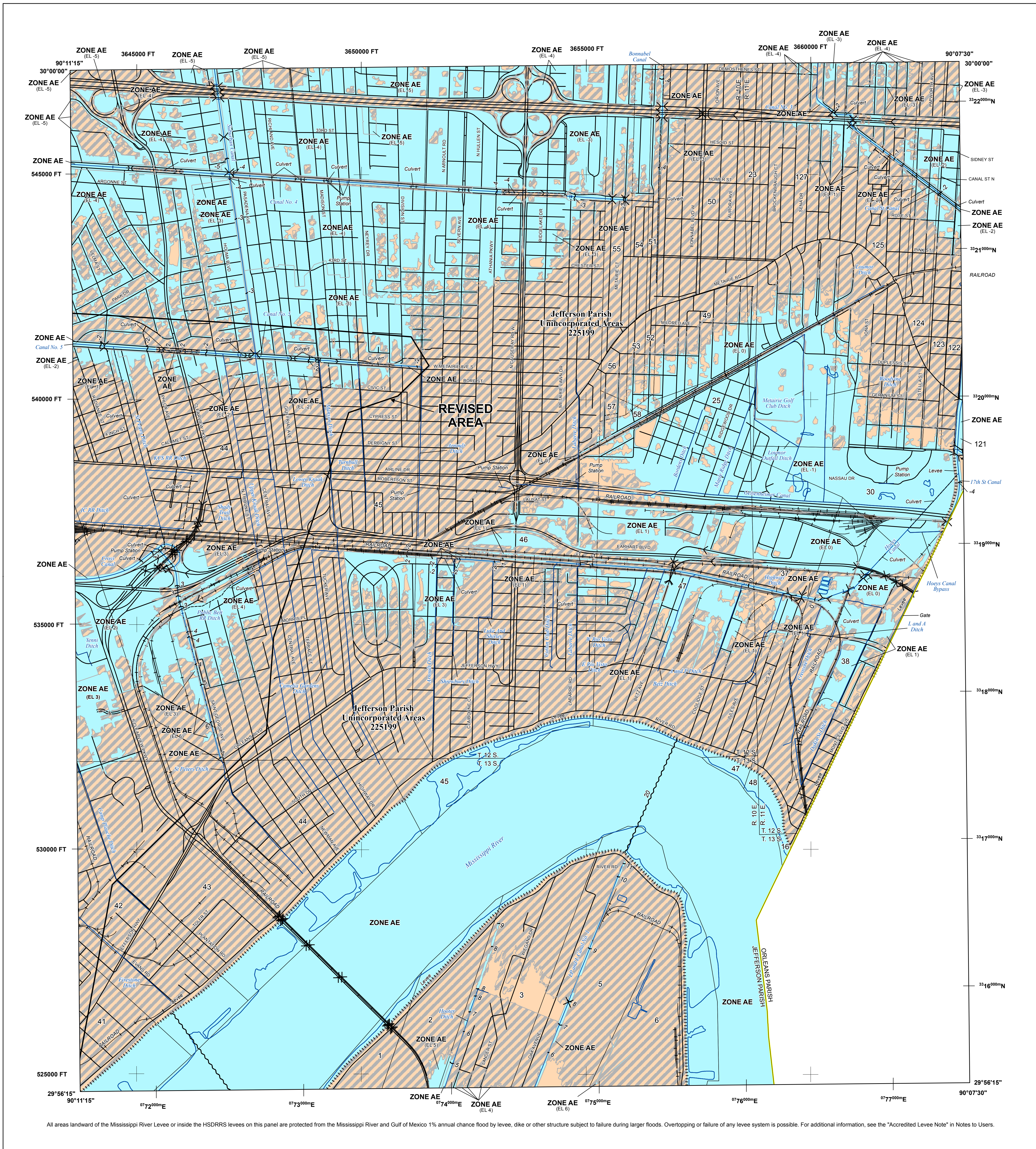
REVISED TO REFLECT LOMR
EFFECTIVE: December 29, 2021

FEDERAL EMERGENCY MANAGEMENT AGENCY

VERSION NUMBER
2.1.3.0

MAP NUMBER
22051C0180F

MAP REVISED
FEBRUARY 2, 2018



All areas landward of the Mississippi River Levee or inside the HSDRRS levees on this panel are protected from the Mississippi River and Gulf of Mexico 1% annual chance flood by levee, dike or other structure subject to failure during larger floods. Overtopping or failure of any levee system is possible. For additional information, see the "Accredited Levee Note" in Notes to Users.

FLOOD HAZARD INFORMATION

SEE FIS REPORT FOR ZONE DESCRIPTIONS AND INDEX MAP
 THE INFORMATION DEPICTED ON THIS MAP AND SUPPORTING
 DOCUMENTATION ARE ALSO AVAILABLE IN DIGITAL FORMAT AT
[HTTPS://MSC.FEMA.GOV](https://MSC.FEMA.GOV)

	Without Base Flood Elevation (BFE) Zone A.V, A99
	With BFE or Depth Zone AE, AO, AH, VE, AR
	Regulatory Floodway
	0.2% Annual Chance Flood Hazard, Areas of 1% annual chance flood with average depth less than one foot or with drainage areas of less than one square mile Zone X
	Future Conditions 1% Annual Chance Flood Hazard Zone X
	Area with Reduced Flood Risk due to Levee See Notes. Zone X
	Areas Determined to be Outside the 0.2% Annual Chance Floodplain Zone X
	Area of Undetermined Flood Hazard Zone D
	Channel, Culvert, or Storm Sewer
	Levee, Dike, or Floodwall
	Cross Sections with 1% Annual Chance Water Surface Elevation (BFE)
	Coastal Transect
	Coastal Transect Baseline
	Profile Baseline
	Hydrographic Feature
	Base Flood Elevation Line (BFE)
	Limit of Study
	Jurisdiction Boundary

NOTES TO USERS

For information and questions about this Flood Insurance Rate Map (FIRM), available products associated with this FIRM, including historic versions, the current map date for each FIRM panel, how to order products, or the National Flood Insurance Program (NFIP) in general, please call the FEMA Mapping and Insurance eXchange at 1-877-FEMA-MAP (1-877-336-2627) or visit the FEMA Flood Map Service Center website at <https://msc.fema.gov>. Available products may include previously issued Letters of Map Change, a Flood Insurance Study Report, and/or digital versions of this map. Many of these products can be ordered or obtained directly from the website.

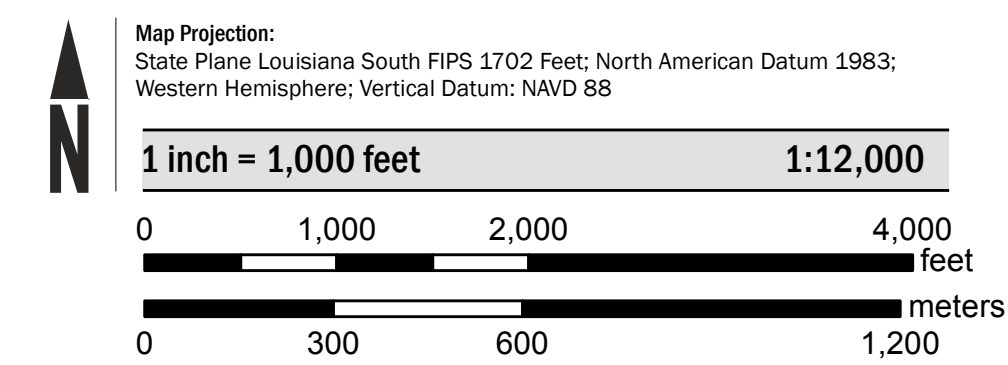
Communities annexing land on adjacent FIRM panels must obtain a current copy of the adjacent panel as well as the current FIRM Index. These may be ordered directly from the Flood Map Service Center at the number listed above.

For community and countywide map dates refer to the Flood Insurance Study report for this jurisdiction. To determine if flood insurance is available in the community, contact your insurance agent or call the National Flood Insurance Program at 1-800-638-6620.

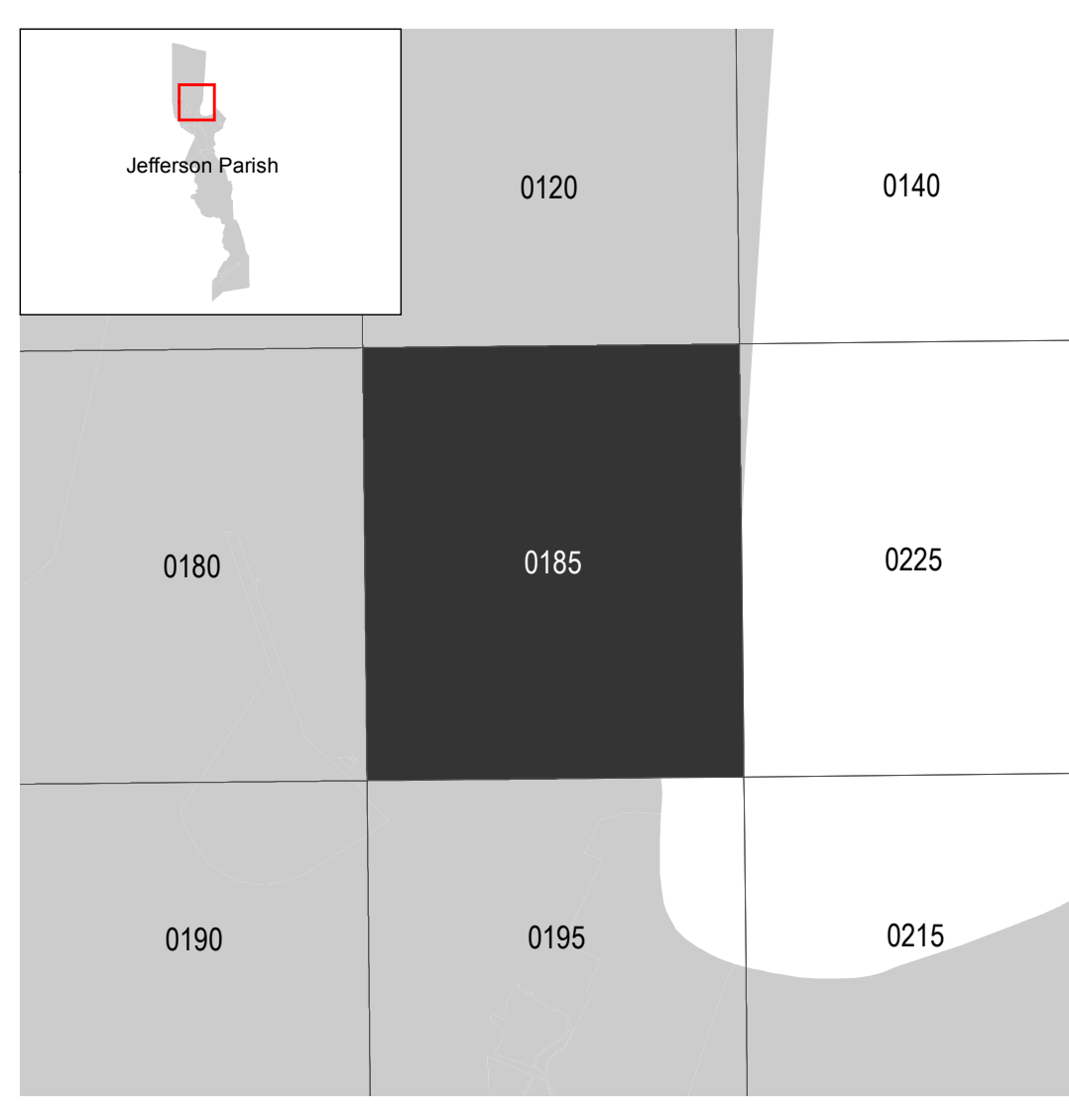
Base map information shown on this FIRM was derived from multiple sources. This information was compiled and provided in digital format by the USACE, New Orleans District; FEMA; Interagency Performance Evaluation Task Force (IPET); United States Fish and Wildlife Service; Jefferson Parish GIS Department; and the Louisiana Department of Transportation. This information was developed at scales of 1"=2000' and 1"=1000'.

ACCREDITED LEEVEE NOTES TO USERS: Check with your local community to obtain more information, such as the estimated level of protection provided (which may exceed the 1-percent-annual-chance level) and Emergency Action Plan, on the levee system(s) shown as providing protection for areas on this panel. To mitigate flood risk in residual risk areas, property owners and residents are encouraged to consider flood insurance and floodproofing or other protective measures. For more information on flood insurance, interested parties should visit <http://www.fema.gov/national-flood-insurance-program>.

SCALE



PANEL LOCATOR



FEMA
 National Flood Insurance Program

NATIONAL FLOOD INSURANCE PROGRAM
 FLOOD INSURANCE RATE MAP






JEFFERSON PARISH, LOUISIANA
 and Incorporated Areas
 PANEL 185 of 600

Panel Contains:
 COMMUNITY NUMBER PANEL SUFFIX
 JEFFERSON PARISH 225199 0185 F

REVISED TO REFLECT LOMR
EFFECTIVE: December 29, 2021

VERSION NUMBER 2.1.3.0
 MAP NUMBER 22051C0185F
 MAP REVISED FEBRUARY 2, 2018

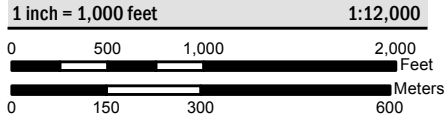
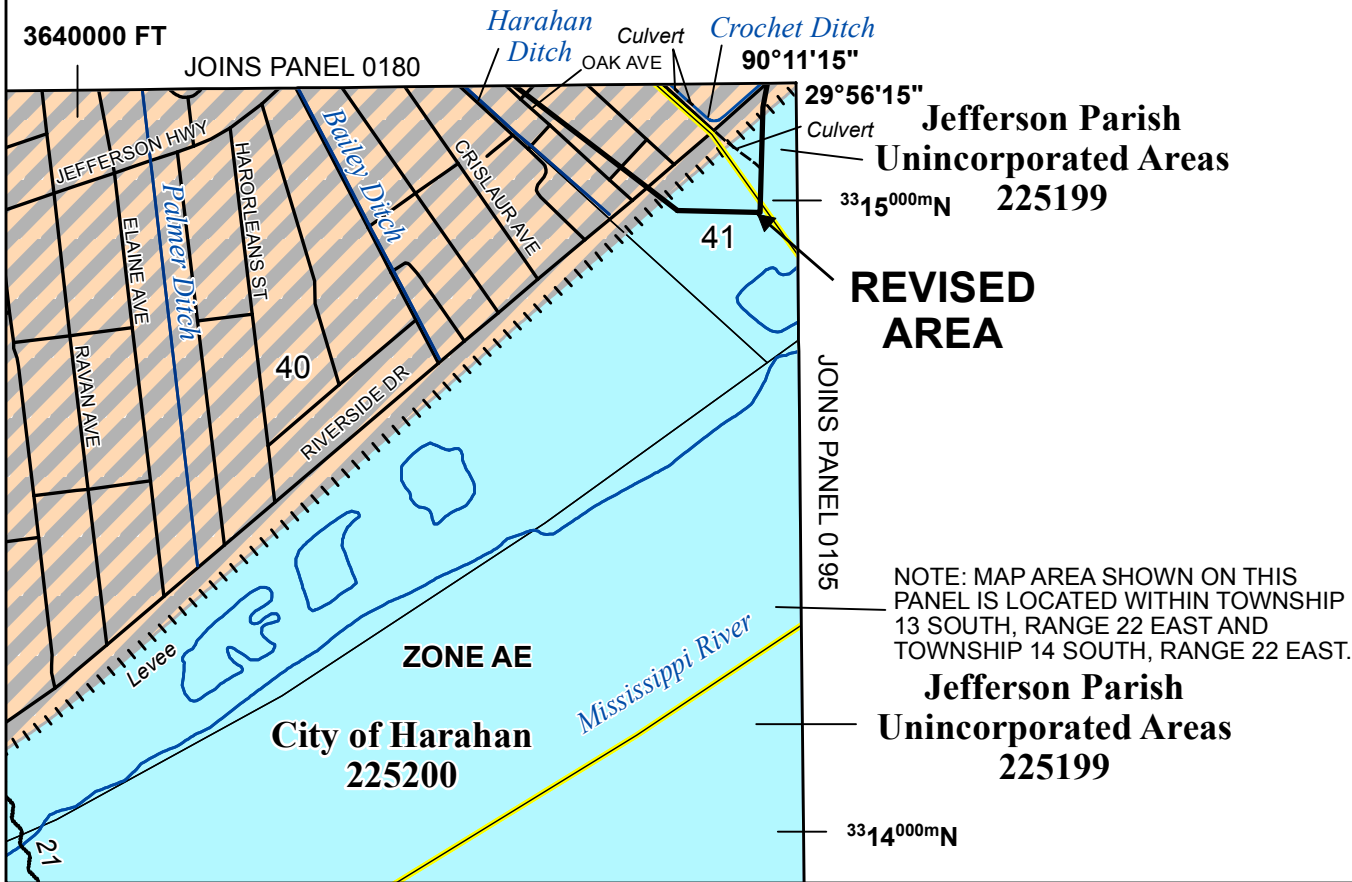
All areas landward of the Mississippi River Levee or inside the HSDRRS levees on this panel are protected from the Mississippi River and Gulf of Mexico 1% annual chance flood by levee, dike or other structure subject to failure during larger floods. Overtopping or failure of any levee system is possible.

SPECIAL FLOOD HAZARD AREAS		Without Base Flood Elevation (BFE) Zone A, V, A99
		With BFE or Depth Zone AE, AO, AH, VE, AR
OTHER AREAS OF FLOOD HAZARD		0.2% Annual Chance Flood Hazard, Areas of 1% annual chance flood with average depth less than one foot or with drainage areas of less than one square mile Zone X
		Future Conditions 1% Annual Chance Flood Hazard Zone X
		Area with Reduced Flood Risk due to Levee See Notes. Zone X

SCALE

Map Projection:
NAD 1983 StatePlane Louisiana South FIPS 1702 Feet;
Western Hemisphere; Vertical Datum: NAVD 88

1 inch = 1,000 feet 1:12,000

FEMA
National Flood Insurance Program

NATIONAL FLOOD INSURANCE PROGRAM
FLOOD INSURANCE RATE MAP

JEFFERSON PARISH,
LOUISIANA
and Incorporated Areas

PANEL 190 OF 600

Panel Contains:

COMMUNITY	NUMBER	PANEL	SUFFIX
HARAHAN, CITY OF	225200	0190	F
JEFFERSON PARISH	225199	0190	F

REVISED TO REFLECT LOMR EFFECTIVE: December 29, 2021

VERSION NUMBER 2.1.3.0
MAP NUMBER 22051C0190F
MAP REVISED FEBRUARY 2, 2018